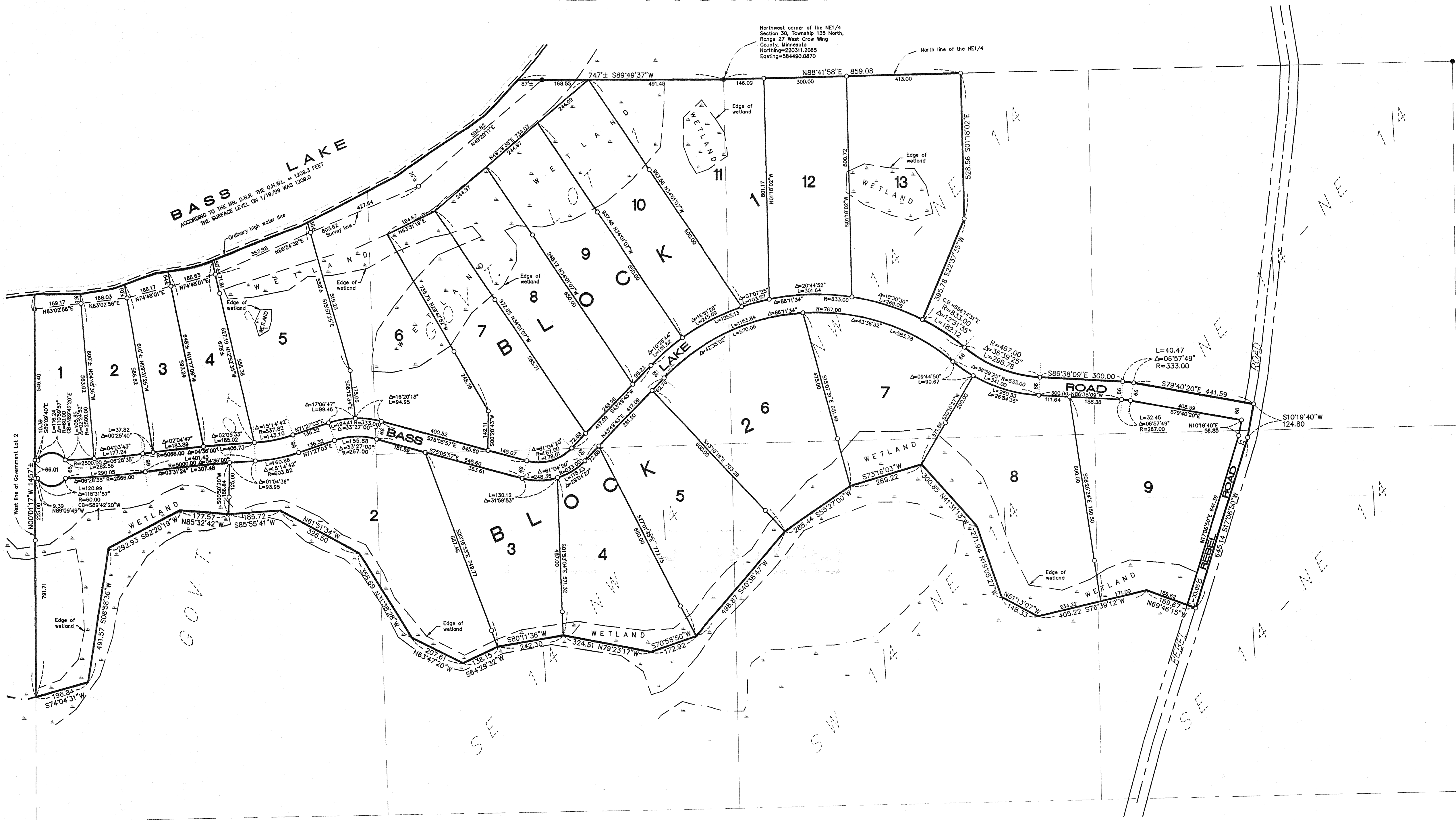


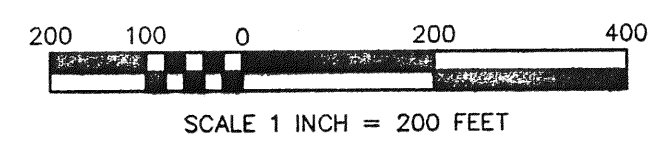
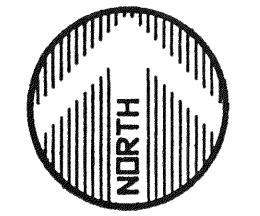
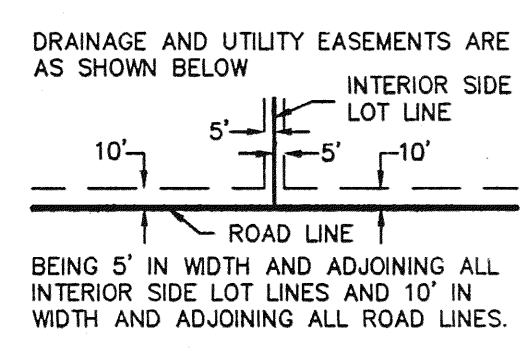
# THE HOMESTEAD

Northwest corner of the NE1/4  
 Section 30, Township 135 North,  
 Range 27 West Crow Wing  
 County, Minnesota  
 Northing=220311.2085  
 Easting=554490.0870



**BASS LAKE**  
 ACCORDING TO THE MIN. D.M.R. THE O.H.W.L. = 1209.5 FEET  
 THE SURFACE LEVEL ON 1/19/99 WAS 1209.0

BENCH MARK:  
 SPIKE IN THE NORTH FACE OF AN 18 INCH  
 RED OAK TREE WHICH BEARS WEST 46.0'  
 FROM THE NORTHWEST CORNER OF LOT 6,  
 BLOCK 1.  
 ELEVATION = 1215.15 FEET -NGVD 1929



- DENOTES 1/2 INCH DIAMETER BY 18 INCH LONG IRON REBAR MONUMENT SET AND MARKED BY LICENSE NUMBER 13336
  - DENOTES IRON MONUMENT FOUND IN PLACE
- ORIENTATION OF THIS BEARING SYSTEM IS BASED ON THE CROW WING COUNTY COORDINATE DATABASE N.A.D. 83/94

**WIDSETH SMITH NOLTING**  
 ENGINEERS ARCHITECTS  
 LAND SURVEYORS PROJECT MANAGERS

2000 Industrial Park Road  
 P.O. Box 2720  
 Baxter, MN 56426  
 218-859-0117