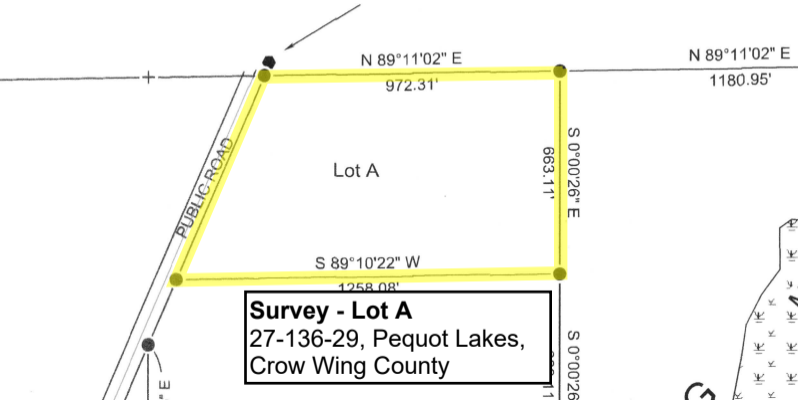


Found rebar at
0.47' N24 39'40"W



N 89°11'02" E

972.31'

N 89°11'02" E

1180.95'

Lot A

S 0°00'26" E

663.11'

S 89°10'22" W

1258.08'

PUBLIC ROAD

Survey - Lot A
27-136-29, Pequot Lakes,
Crow Wing County

S 0°00'26" E

E

