

FIBO

Mine Lake County Forest Road # 17, Crow Wing County, Minnesota


A T T A C H M E N T


PARCEL #	RE CODE	FEENAME	SECTION	TOWNSHIP	RANGE	LEGAL DESCRIPTION
PARCEL 1	540213404200009	POTLATCH FOREST HOLDINGS INC	21	44	31	S1/2 OF GOV LOT 4
PARCEL 2	540213404100009	TAX FORFEITED	21	44	31	N1/2 OF GOV LOT 4
PARCEL 3	<i>52328-175-12p</i> 540213101000009	WETHERBEE, GEORGE & DOROTHY	21	44	31	GOV LOT 1
PARCEL 4	540214102000009	TAX FORFEITED	21	44	31	GOV LOT 2
PARCEL 5	540214403200009	BESMEHN, PATICK SOUTHSIDE REPAIR	21	44	31	W1/2 OF GOV LOT 3
PARCEL 6	<i>84114-281-114</i> 540214403100009	FEIERABEND, BRADLEY T	21	44	31	E1/2 OF GOV LOT 3
PARCEL 7	540211400000AA0	TAX FORFEITED	21	44	31	UND. 1/5 INT. IN SE1/4 OF NE1/4
PARCEL 7	540211400000AB0	TAX FORFEITED	21	44	31	UND. 4/5 INT. IN SE1/4 OF NE1/4
PARCEL 8	<i>55836-187-36</i> 540211100000AA0	TAX FORFEITED	21	44	31	UND. 1/5 INT. IN NE1/4 OF NE1/4
PARCEL 8	540211100000AB0	TAX FORFEITED	21	44	31	UND. 4/5 INT. IN NE1/4 OF NE1/4
PARCEL 9	<i>80740-270-40</i> 540223201000009	FEIERABEND, TOM E & PENNY M (1/2 INT) AND ALLEN, PAUL & SUSAN (1/2 INT)	22	44	31	GOV LOT 1
PARCEL 10	<i>80740-270-40</i> 540222300000009	FEIERABEND, TOM E & PENNY M (1/2 INT) AND ALLEN, PAUL & SUSAN (1/2 INT)	22	44	31	SW1/4 NW1/4
PARCEL 11	<i>80740-270-40</i> 540222200000009	FEIERABEND, TOM E & PENNY M (1/2 INT) AND ALLEN, PAUL & SUSAN (1/2 INT)	22	44	31	NW1/4 NW1/4
PARCEL 12	<i>OK 80740-270-40</i> 540153300000009	FEIERABEND, TOM E & PENNY M (1/2 INT) AND ALLEN, PAUL & SUSAN (1/2 INT)	15	44	31	SW1/4 SW1/4
PARCEL 13	540164400000009	POTLATCH FOREST PRODUCTS CORP.	16	44	31	SE1/4 SE1/4

RETURN TO

Land Dept

May 7th, 2008
DATE OF PUBLIC HEARING


RACHEL REABE NYSTROM, CHAIR COUNTY RECORDING SPACE BELOW
BOARD OF COUNTY COMMISSIONERS
CROW WING COUNTY, MINNESOTA

ATTEST: 
DEBORAH A. ERICKSON, COUNTY AUDITOR
CROW WING COUNTY, MINNESOTA
Adopted at Brainerd, Minnesota, this 10th day of June, 2008

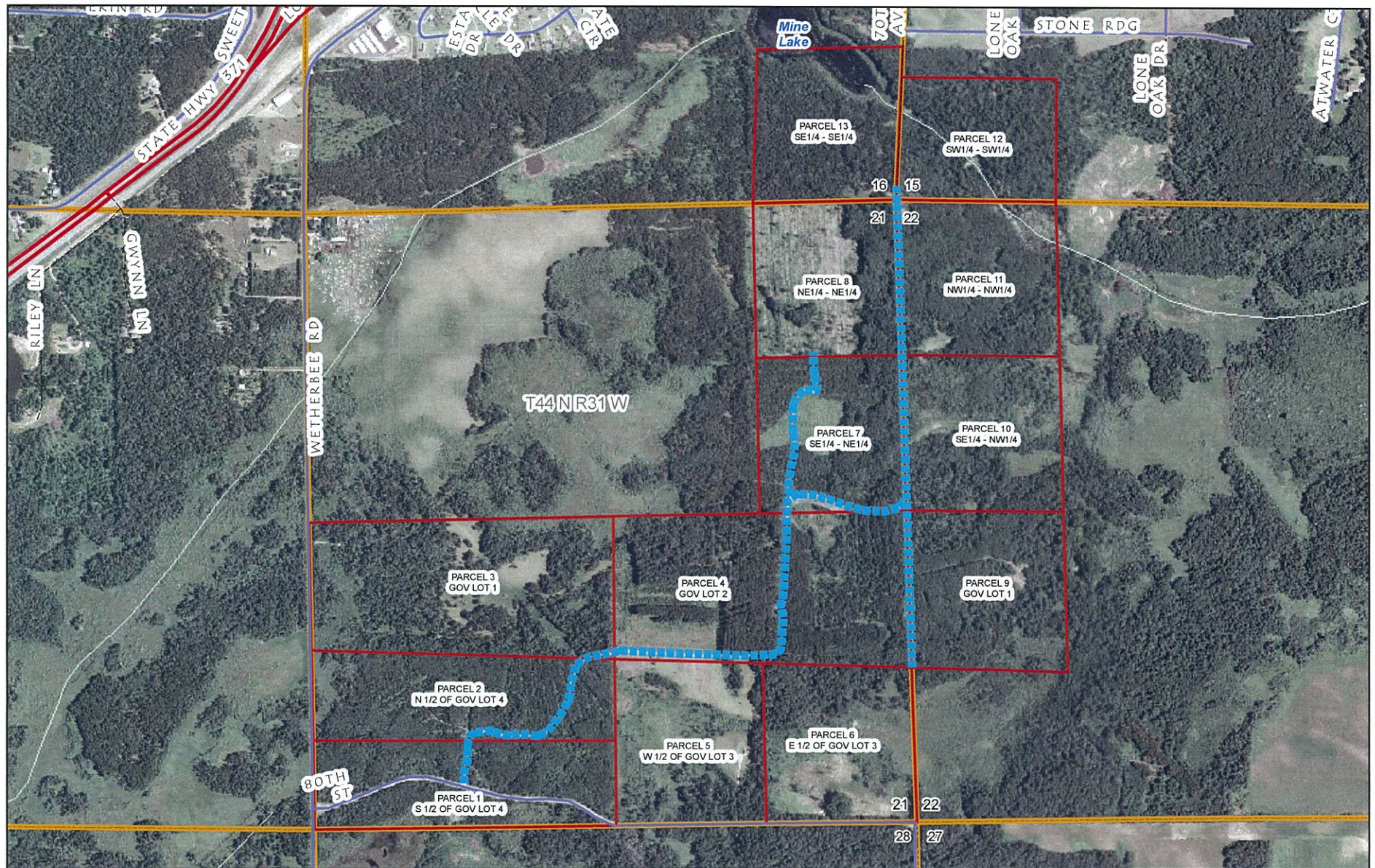
N/C
CO WK

Office of County Recorder }
County of Crow Wing, MN }

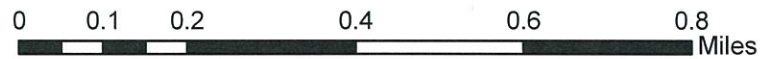
I hereby certify that the within instrument was filed
in this office for record on the 21 day of July
A.D. 2008 at 4:00 o'clock p M.
and was duly recorded as Doc. No. 0751007

[Signature]
By: [Signature] County Recorder
Deputy

Mine Lake County Forest Road #17, Crow Wing County, Minnesota



N
1 inch equals 1,157 feet



----- Mine Lake County Forest Rd

MS 89.715 states "the roads to be recorded will be to the width of the actual use including ditches, backslopes, fills, and maintained rights-of-ways". County Forest Roads are variable in width and the map symbol representing the County Forest Roads is intended to represent the location of those County Forest Roads, not the actual width.