

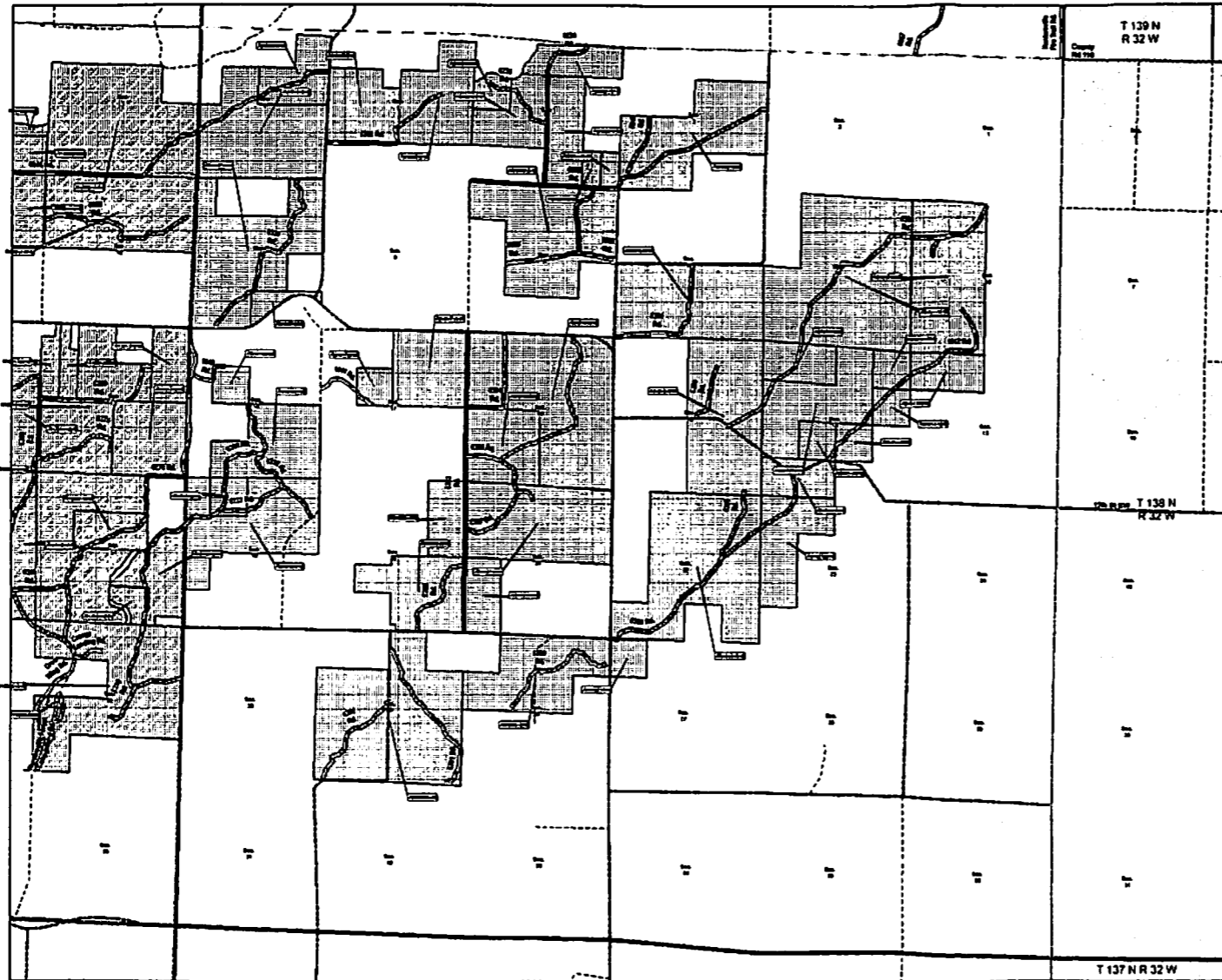
and 66.713 states "No roads to be recorded will be to the width of the actual road including ditches, shoulders, etc, and maintained right-of-way". County Prescriptive Roads are depicted in width and the area symbol corresponding to these Prescriptive Roads is intended to represent the location of these Prescriptive Roads, not the actual width.



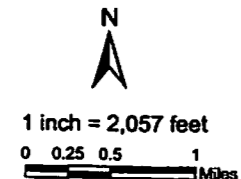
# DNR Prescriptive Forest Road Easements Wadena County, Minnesota

Twp 138 Rng 33

Print Date: May 14, 2009



Parcel #	Owner	Legal Description
20481001	STATE FOREST	20.00 AC - S1/2 NE1/4 & SW1/4 & NW1/2 SE1/4 of Sec.3
20481002	STATE OF MINN	10.00 AC - LOTS 6, 7 & 8 of Sec.4
20481003	POTLATCH CORPORATION	10.00 AC - SW1/4 NE1/4 & NW1/2 SE1/4 of Sec.4
20481004	STATE FOREST	11.00 AC - LOTS 4 & 5 NW1/4 of Sec.4
20481005	STATE OF MINN	20.00 AC - LOT 9 of Sec.4
20481006	MELSON, CAROL	20.00 AC - NW1/2 SW1/4 SE1/4 of Sec.4
20481007	PEYTON, MARK & BARRY	20.00 AC - E1/2 SE1/4 NE1/4 of Sec.4
20481008	STATE OF MINN	10.00 AC - LOT 1 & 6 S1/2 NE1/4 & NW1/2 SE1/4 of Sec.4
20481009	POTLATCH CORPORATION	10.00 AC - NW1/2 SW1/4 & S1/2 NW1/4 - LESS THE NE1/4 SE1/4 NW1/4 of Sec.4
20481010	STATE FOREST	14.00 AC - LOT 1 & 6 S1/2 NE1/4 of Sec.4
20481011	POTLATCH CORPORATION	20.00 AC - NE1/4 NW1/4 & ALL OF SW1/4 SE1/4 of Sec.4
20481012	STATE FOREST	20.00 AC - NE1/4 NE1/4 & S1/2 NE1/4 & LOTS 1 & 2 & E1/2 SW1/4 & NW1/4 SE1/4 & 2 A OF NE1/4 SE1/4 of Sec.7
20481013	POTLATCH CORPORATION	40.00 AC - ALL TRACT PT OF S1/2 SW1/4 LYING N OF HWY 10 of Sec.7
20481014	STATE FOREST	20.00 AC - NW1/2 SW1/4 SW1/4 SW1/4 & NE1/4 SW1/4 & NW1/4 SE1/4 of Sec.8
20481015	STATE FOREST	20.00 AC - S1/2 OF SECTION of Sec.10
20481016	STATE FOREST	20.00 AC - ALL SEC 11 E1/2 SW1/4 NW1/4 of Sec.11
20481017	STATE FOREST	20.00 AC - W1/2 OF SECTION of Sec.12
20481018	STATE FOREST	20.00 AC - NW1/4 of Sec.12
20481019	STATE OF MINN	20.00 AC - NW1/2 SW1/4, S1/2 SW1/4, SW1/4 SW1/4, NE1/4 SW1/4 & SW1/4 SE1/4 of Sec.14
20481020	STATE OF MINN	40.00 AC - NE1/4 NE1/4 of Sec.14
20481021	STATE FOREST	20.00 AC - NE1/4 NE1/4 & NW1/2 NW1/4 & E1/2 SW1/4 of Sec.14
20481022	STATE FOREST	20.00 AC - NE1/4 NE1/4 & NW1/2 NW1/4 & E1/2 SW1/4 of Sec.14
20481023	STATE FOREST	20.00 AC - NE1/4 NE1/4 & NW1/2 NW1/4 & E1/2 SW1/4 of Sec.14
20481024	POTLATCH CORPORATION	40.00 AC - NE1/4 SE1/4 of Sec.14
20481025	STATE FOREST	40.00 AC - NE1/4 SW1/4 of Sec.14
20481026	STATE OF MINN	20.00 AC - E1/2 SEC 1 & NW1/4 of Sec.15
20481027	STATE FOREST	10.00 AC - SW1/4 of Sec.15
20481028	STATE OF MINN	10.00 AC - NE1/4 of Sec.17
20481029	STATE FOREST	10.00 AC - SE1/4 NW1/4 & SE1/4 SW1/4 of Sec.17
20481030	STATE FOREST	20.00 AC - SE1/4 NW1/4, SE1/4 SW1/4 & SE1/4 of Sec.18
20481031	STATE FOREST	20.00 AC - SE1/4 NW1/4, SE1/4 SW1/4 & SE1/4 of Sec.18
20481032	STATE FOREST	20.00 AC - NE1/4, SE1/4 NW1/4 & LOTS 1, 2 & 3 of Sec.19
20481033	POTLATCH CORPORATION	40.00 AC - NE1/4 NW1/4 of Sec.19
20481034	STATE FOREST	20.00 AC - NW1/4 OF NE1/4 & SW1/4 OF NE1/4 SW1/4 & SE1/4 E1/2 1 A of Sec.20
20481035	POTLATCH CORPORATION	20.00 AC - E1/2 NW1/4 of Sec.20
20481036	STATE FOREST	20.00 AC - NW1/2 SW1/4 of Sec.21
20481037	INDUSTRIAL JOHN	60.00 AC - W1/2 SW1/4 of Sec.21
20481038	STATE FOREST	40.00 AC - NE1/4, E1/2 NW1/4, SW1/4 SW1/4 E1/2 SW1/4 & NW1/4 SE1/4 & E1/2 SW1/4 of Sec.22
20481039	STATE FOREST	20.00 AC - NW1/2 SW1/4, SW1/4 SW1/4, NW1/4 SW1/4 & W1/2 SE1/4 of Sec.22
20481040	STATE FOREST	20.00 AC - SW1/4 NE1/4 & NW1/4 NW1/4 of Sec.27
20481041	POTLATCH CORPORATION	20.00 AC - NW1/2 NE1/4, SW1/4 NE1/4, E1/2 SW1/4, SW1/4 SW1/4 of Sec.29
20481042	STATE FOREST	20.00 AC - S1/2 NE1/4, NW1/4 NE1/4, E1/2 NW1/4 & ALL S1/2 of Sec.29



Symbol	CDP Forest Road	Highway & Street	Public Land Survey Line	County Boundary
[Symbol]	[Symbol]	[Symbol]	[Symbol]	[Symbol]
[Symbol]	[Symbol]	[Symbol]	[Symbol]	[Symbol]
[Symbol]	[Symbol]	[Symbol]	[Symbol]	[Symbol]
[Symbol]	[Symbol]	[Symbol]	[Symbol]	[Symbol]
[Symbol]	[Symbol]	[Symbol]	[Symbol]	[Symbol]
[Symbol]	[Symbol]	[Symbol]	[Symbol]	[Symbol]
[Symbol]	[Symbol]	[Symbol]	[Symbol]	[Symbol]

March 18, 2009 Date of Public Hearing  
 May 26, 2009 Date of Adoption  
 Mark Holsten, Commissioner of Natural Resources  
 Date

OFFICE OF COUNTY RECORDER  
 WADENA COUNTY MINNESOTA  
 I hereby certify that this instrument # 224591  
 was filed/recorded in this office  
 for record on the 27th day of  
 May 2009 at 10:00 am  
 Selected Hennepin County Recorder  
 by [Signature]  
 \$34.00 recording fee  
 [Signature]

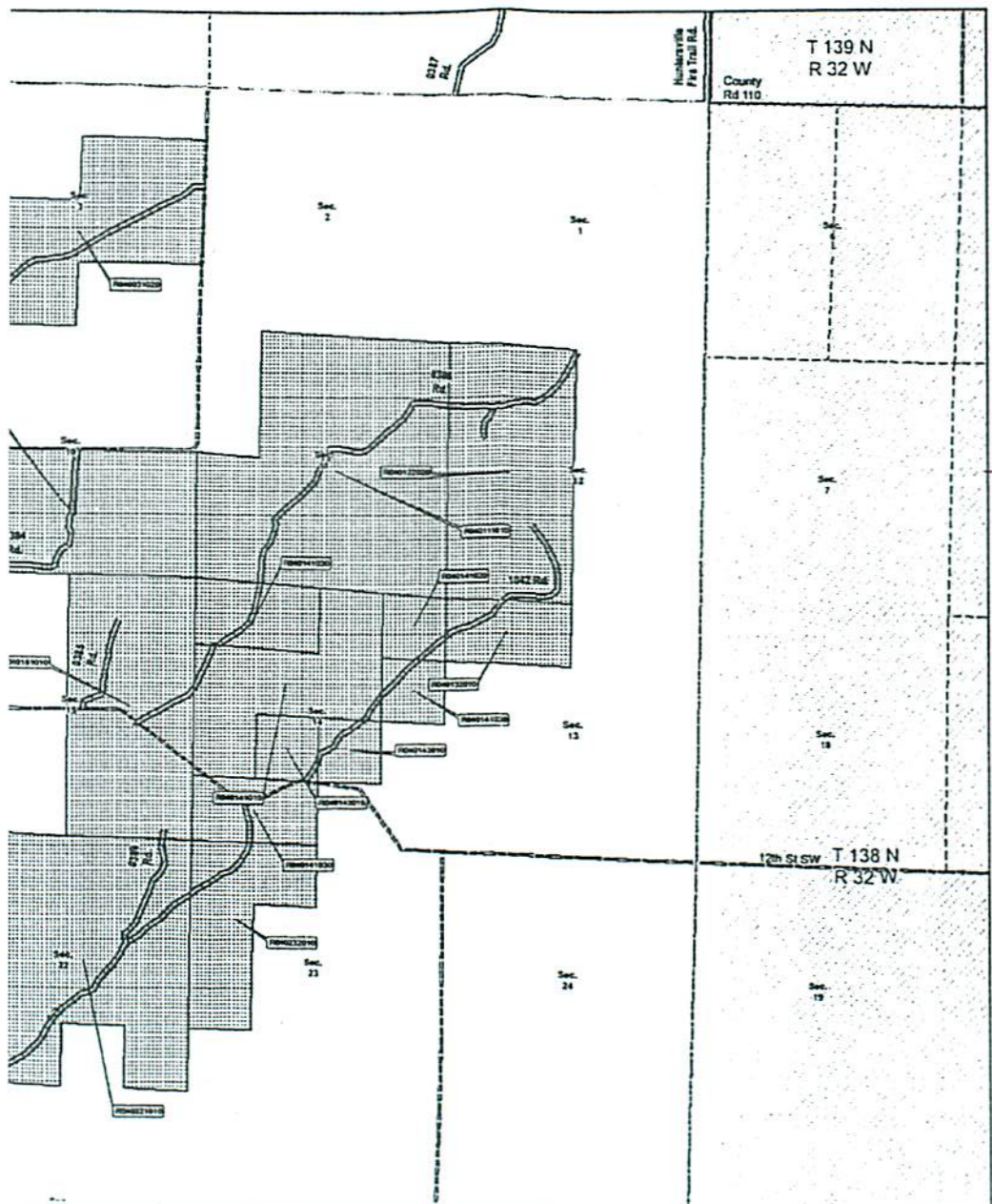
RECORDED OFFICE FILE  
 27th DAY OF May  
 2009  
 [Signature]  
 County Auditor/Recorder

# iptive Forest Road Easements Wadena County, Minnesota

*Enlarged Copy  
of Legal From  
Doc No 224591*

g 33

Print Date: May 14, 2009



PIN	Owner	Legal Description
RD40031020	STATE FOREST	320.00 AC - S1/2 NE1/4 & SW1/4 & N1/2 SE1/4 of Sec.3
RD40041010	STATE OF MINN	101.32 AC - LOTS 1,2,3 & 6 of Sec.4
RD40041030	POTLATCH CORPORATION	120.00 AC - SW1/4 NE1/4 & W1/2 SE1/4 of Sec.4
RD40042010	STATE FOREST	118.50 AC - LOTS 4 & N1/2 SW1/4 of Sec.4
RD40042020	STATE OF MINN	38.25 AC - LOT 5 of Sec.4
RD40044040	NELSON, CAROL	29.00 AC - W1/2 SE1/4 SE1/4 of Sec.4
RD40044045	PETSCH, MARK & MARY	29.00 AC - E1/2 SE1/4 SE1/4 of Sec.4
RD40051010	STATE OF MINN	193.14 AC - LOT 1 & S1/2 NE1/4 & N1/2 SE of Sec.5
RD40052010	POTLATCH CORPORATION	150.00 AC - N1/2 SW1/4 & S1/2 NW1/4 ~ LESS THE NE1/4 SE1/4 NW1/4 of Sec.5
RD40061010	STATE FOREST	114.21 AC - LOT 1 & S1/2 NE1/4 of Sec.6
RD40062010	POTLATCH CORPORATION	325.05 AC - SE1/4 NW1/4 & ALL OF FR S1/2 of Sec.6
RD40071010	STATE FOREST	379.94 AC - NE1/4 NE1/4 & S1/2 NE1/4 & LOTS 1 & 2 & E1/2 SW1/4 & NW1/4 SE1/4; SE1/4 NW1/4 & 2 A OF SE1/4 SE1/4 of Sec.7
RD40074035	POTLATCH CORPORATION	40.00 AC - ALL THAT PT OF S1/2 SE1/4 LYING N OF HWY 18 of Sec.7
RD40091010	STATE FOREST	360.00 AC - N1/2 SEC EXC SW1/4 NW1/4 & NE1/4 SW1/4 & NW1/4 SE1/4 of Sec.9
RD40103010	STATE FOREST	320.00 AC - S1/2 OF SECTION of Sec.10
RD40111010	STATE FOREST	560.00 AC - ALL SEC 11 EXC W1/2 NW1/4 of Sec.11
RD40122020	STATE FOREST	320.00 AC - W1/2 OF SECTION of Sec.12
RD40132010	STATE FOREST	80.00 AC - N1/2 NW1/4 of Sec.13
RD40141010	STATE OF MINN	280.00 AC - W1/2 NE1/4; S1/2 NW1/4; NW1/4 SW1/4; NE1/4 SE1/4 & SW1/4 SE1/4 of Sec.14
RD40141020	STATE OF MINN	40.00 AC - NE1/4 NE1/4 of Sec.14
RD40141030	STATE FOREST	200.00 AC - SE1/4 NE1/4 & N1/2 NW1/4 & S1/2 SW1/4 of Sec.14
RD40141030	STATE FOREST	200.00 AC - SE1/4 NE1/4 & N1/2 NW1/4 & S1/2 SW1/4 of Sec.14
RD40141030	STATE FOREST	208.00 AC - SE1/4 NE1/4 & N1/2 NW1/4 & S1/2 SW1/4 of Sec.14
RD40143010	POTLATCH CORPORATION	40.00 AC - NW1/4 SE1/4 of Sec.14
RD40143015	KILANOWSKI/JASON R & PAULINE	40.00 AC - NE1/4 SW1/4 of Sec.14
RD40151010	STATE FOREST	320.00 AC - E1/2 SEC of Sec.15
RD40161010	STATE OF MINN	480.00 AC - E1/2 SEC & NW1/4 of Sec.16
RD40163010	STATE FOREST	160.00 AC - SW1/4 of Sec.16
RD40171010	SILVA/EARL F & BERNICE M	160.00 AC - NE1/4 of Sec.17
RD40172030	STATE FOREST	80.00 AC - SE1/4 NW1/4 & SE1/4 SW1/4 of Sec.17
RD40182020	STATE FOREST	240.00 AC - SE1/4 NW1/4; SE1/4 SW1/4 & SE1/4 of Sec.18
RD40182020	STATE FOREST	240.00 AC - SE1/4 NW1/4; SE1/4 SW1/4 & SE1/4 of Sec.18
RD40191010	STATE FOREST	283.25 AC - NE1/4; SE1/4 NW1/4 & LOTS 1, 2 & 3 of Sec.19
RD40192010	POTLATCH CORPORATION	40.00 AC - NE1/4 NW1/4 of Sec.19
RD40201010	STATE FOREST	220.00 AC - NW1/4 OF NE1/4 & S 30A OF NE1/4 SW1/4 & SE1/4 EX 1 A of Sec.20
RD40201020	POTLATCH CORPORATION	80.00 AC - E1/2 NE1/4 of Sec.20
RD40211010	STATE FOREST	320.00 AC - N1/2 SEC of Sec.21
RD40213020	KNOX/THOMAS JOHN	80.00 AC - W1/2 SW1/4 of Sec.21
RD40221010	STATE FOREST	480.00 AC - NE1/4; E1/2 NW1/4; SW1/4 SW1/4 E1/2 SE1/4 & NW1/4 SE1/4 & E1/2 SW1/4 of Sec.22
RD40222010	STATE FOREST	240.00 AC - N1/2 NW1/4; SW1/4 NW1/4; NW1/4 SW1/4 & W1/2 SE1/4 of Sec.23
RD40222010	STATE FOREST	240.00 AC - N1/2 NW1/4; SW1/4 NW1/4; NW1/4 SW1/4 & W1/2 SE1/4 of Sec.23
RD402271010	POTLATCH CORPORATION	80.00 AC - SW1/4 NE1/4 & NW1/4 NW1/4 of Sec.27
RD40231010	STATE FOREST	240.00 AC - N1/2 NE1/4; SW1/4 NE1/4; E1/2 NW1/4; SW1/4 NW1/4 of Sec.28
RD40231020	STATE FOREST	520.00 AC - S1/2 NE1/4; NW1/4 NE1/4; S1/2 NW1/4 & ALL S1/2 of Sec.29